

Overview of the ACTION Plan

Assessment of the Risk Narrative:

A spoken or written account of connected events.

Connections:

What attracts illegal behavior to high---crime areas and why do crimes cluster there over time?

Task Management:

Decide the feasibility and responsibilities for performing tasks to collect data, perform analyses, and respond to information and spatial intel.

Intervention Planning and Implementation:

Intervention Planning Intel Report (IPIR) presents spatial analyses to develop interventions.

The IPIR's main purpose is to outline the ways in which the problem under study occurs in the study setting, and the factors that are important in elevating risks of it continuing.

Outcome Evaluation:

Measure not only changes in crime counts, but also changes in the spatial patterns of crime occurrence. Also consider diffusion of benefits and assess whether crime displacement occurred (e.g., to high risk places, or elsewhere). Establish whether proper procedures have been implemented.

Notifying Others:

This is the people---oriented aspect of risk reduction strategies; involves communicating information. Utilize technology, media outlets, and personal communications to share key information about risk management efforts with a variety of stakeholder populations.

NEWARK PUBLIC SAFETY COLLABORATIVE

Rutgers University - Newark
School of Criminal Justice
123 Washington St
Newark, NJ 07102

Learn more: PublicSafetyCollaborative.org

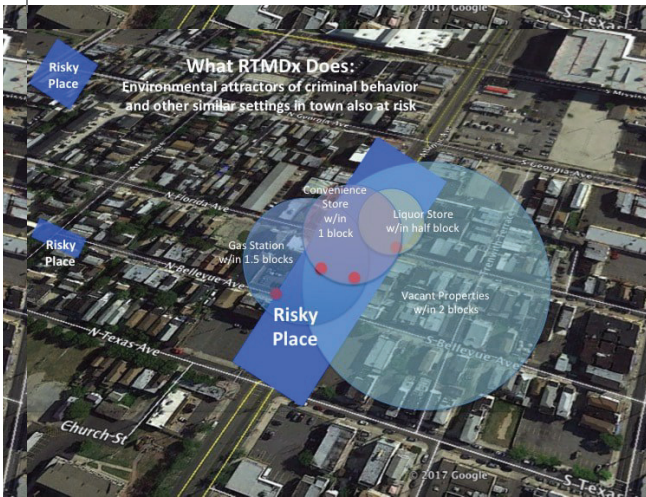


WEST WARD RISK TERRAIN MODELING RESULTS

WHO WE ARE

The Newark Public Safety Collaborative (NPSC) enhances the operational value of existing technology and data to improve public safety in Newark. As part of the Rutgers School of Criminal Justice, it coordinates and capitalizes on the various strengths of all public safety stakeholders throughout the City. The NPSC topples siloes and integrates multiple stakeholders into a collaborative process of building narratives to define and solve problems in ways that shares the burden of crime prevention and public safety. The NPSC is informed by data and evidence-based practices.

PublicSafetyCollaborative.org



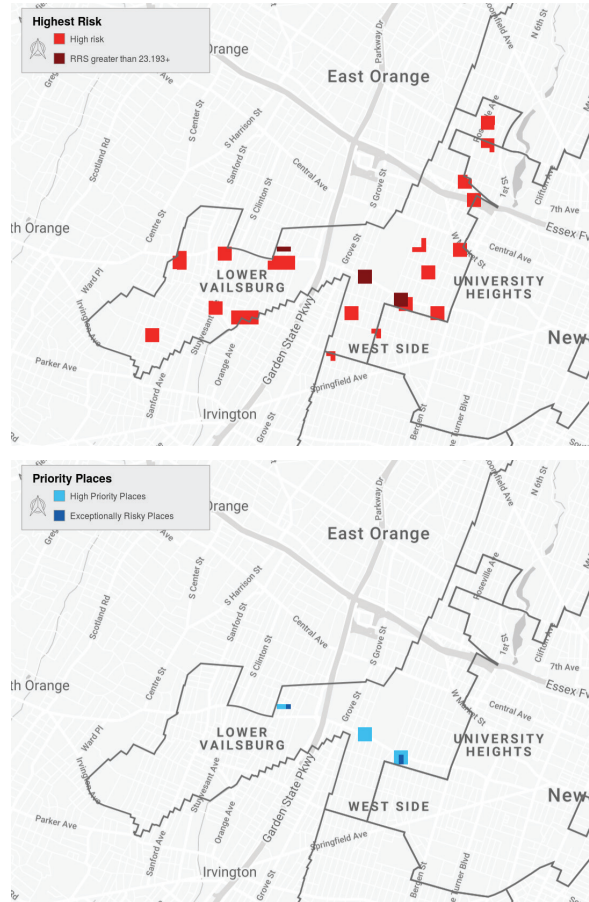
WHAT IS RISK TERRAIN MODELING

RTM is a spatial diagnostic and vulnerability assessment. RTM diagnoses environmental conditions that lead to crime. This assessment is used for problem-solving, forecasting, and to inform decisions about resource deployments, crime prevention and risk reduction strategies that are data-driven, transparent, civilly just, and sustainable.

RTM focuses on places, not people. Crime prevention and risk reduction actions are effective and evidence-based. RTM promotes unbiased and positive engagements with communities.

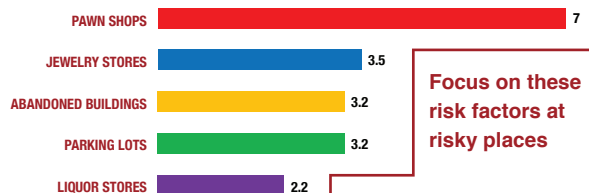
Raw crime data tells you where reported incidents are located after they happen. RTM enhances raw data to tell you where and why. It diagnoses environmental attractors of criminal behavior and finds other similar settings at risk.

BURGLARY IN THE WEST WARD, NEWARK



Crime Attractors are features of the environment that statistically relate to crime patterns.

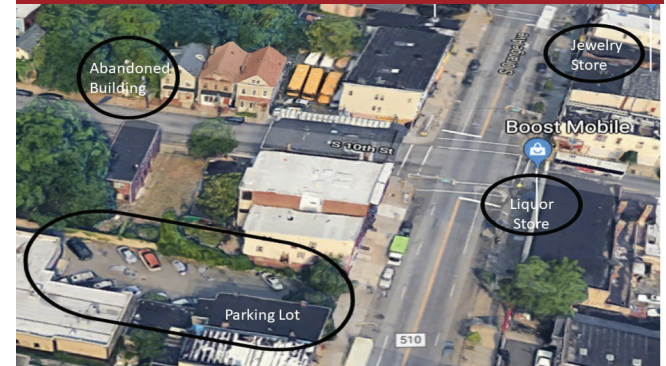
Interpret **Risk Values** as weighted influences of these features on criminal behaviors nearby.



Focus on these risk factors at risky places

BURGLARY IN THE WEST WARD, NEWARK

- 228 burglary incidents in 2018
- 1 pawn shop
- 2 jewelry stores
- 266 abandoned buildings
- 174 parking lots
- 22 liquor stores



The South Orange Ave/S 10th St and South Orange Ave/Chelsea Ave areas are two of the high priority /high risk places identified by the RTM analysis. Each of the places located in these areas have a number of the significant risk factors near the location of a burglary incident.

